

# RGA-6010

PRECISION MEASUREMENT OF PROTECTIVE  
HEAT TREATING ATMOSPHERE

## Continuous NDIR Gas Analyzer



Front View



Rear View

- Integrated automatic calibration
- 4-20mA output for each gas
- Two user-assignable alarm outputs with visible alarm indication
- Custom configurable calculations and gas ratios available
- Digital inputs for:
  - Pump Start/Stop
  - Inhibit COF/PF adjustment
  - Initiate Zero calibration
  - Initiate Span calibration
- IR %C Calculation and indication of probe %C
- Two Ethernet ports [one direct to screen, another direct to sensor]
- Capable of Probe Plus IR for automatic adjustment of COF/PF
- Automatic sampling parameters prevent damage to instrument
- Color touch screen
- Multi-language support

### Included software for data management:

- Data manager for downloading
- Print charts and tabular data
- Setup facility and furnace identifiers
- Add notes when capturing data
- Real time graphical display on PC
- Export utilities
- Backup data manager

### Gas Cells Available:

- **Carbon monoxide (CO)**  
Range: 0 - 30%
- **Carbon dioxide (CO<sub>2</sub>)**  
Range: 0 - 2.00%, 0 - 10%
- **Natural gas (CH<sub>4</sub>)**  
Range: 0 - 30%
- **Hydrogen (H<sub>2</sub>)**  
Range: 0 - 100%

### Communications :

(2 Ethernet, RS485, [4] 4-20mA)

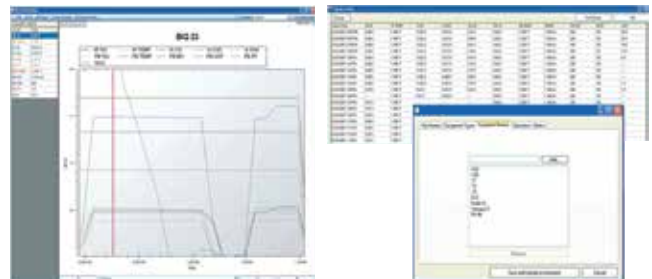
### Two USB ports

(1 for communications, 1 for off-line data storage)

110V or 220V operation

Custom ranges available for all gases, consult factory

Exothermic gas ranges available



INNOVATIVE SOLUTIONS WORLDWIDE

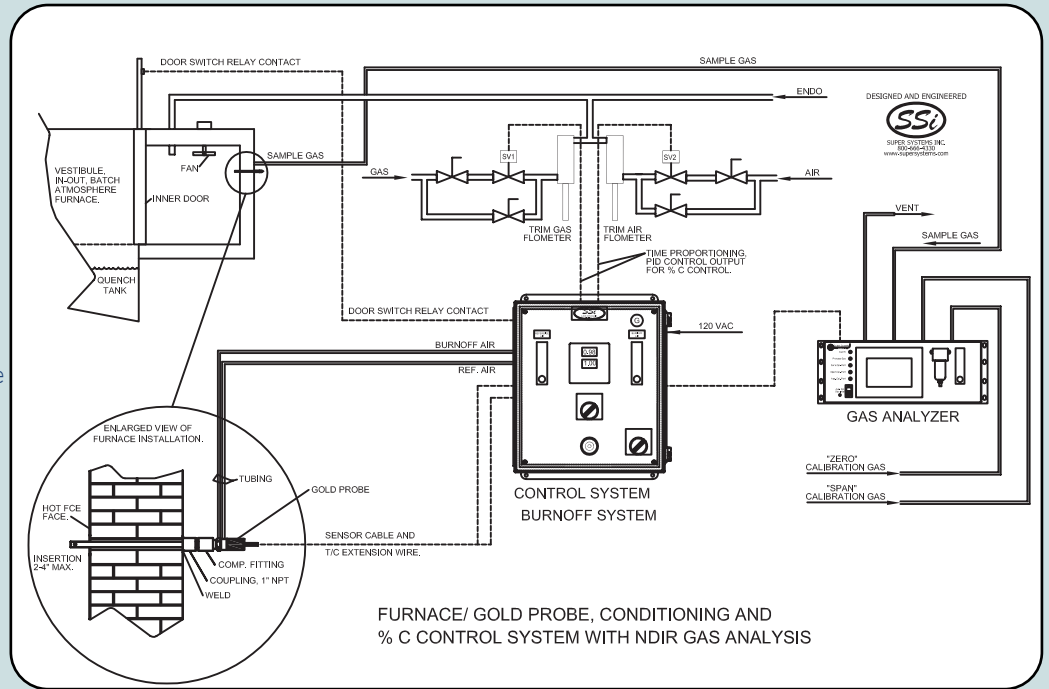


Super **Systems**  
incorporated

# Critical Furnace Control

## Probe + IR System

- Automatically adjusts CO Factor (COF)
- COF limits predetermined for % Carbon adjustment
- Millivolt and temperature limits for furnace gas sampling
- Switch from Probe + IR control to monitor mode



## Standard 19" Rack Setup for JIS or EIA Mounting Holes

Face plate width: 19" (48.26 cm)  
 Face plate height: 7" (17.78 cm)  
 Enclosure width: 17.25" (43.815 cm)  
 Enclosure height: 7" (17.78 cm)  
 Enclosure depth: 15.25" (38.735 cm)



## RGA-6010 Benefits

### Heat Treat Furnaces Conventional Endo Gas

- Enhances quality through process repeatability and accuracy
- On-screen trending chart
- Probe + IR control replaces manual adjustment of COF
- 3-gas analyzer shows possible problems (sooting, water leaks, air leaks, radiant tube leaks)
- Stainless steel fittings, optional stainless steel transducers are required for use with non-dissociated Ammonia
- AutoCalibration integrated into the MGA 6010-R
- CarbCALC II is available on touch screen as a reference tool
- Session recording with customizable user names and equipment

### Ancillary Items

- Zero gas cylinder Part# 13505
- Span gas cylinder Part# 13504
- Sample tube Part# 20264



**Super Systems**  
 incorporated

7205 Edington Drive  
 Cincinnati, OH 45249  
 513.772.0060 phone  
 513.772.9466 fax